

## **UPDATE: THE EMTR COMMISSION (2009)**

Here is the work from the EMTR commission.

**We will present this in detail at the GA, for discussion.**

**This document is for information.**

We made 7 working groups for this work.

Now you can see how much we have done, so far, this year.

**In this moment we are discussing this together as a group. We are also developing documents for this process.**

*Commission members:*

Jos De Backer & Julie Sutton (co-chairs), Rut Wallius, Monika Nöcker Ribaupierre, Adrienne Lerner, Ilse Wolfram, Jaakko Erkkila, Ferdinando Suvini.

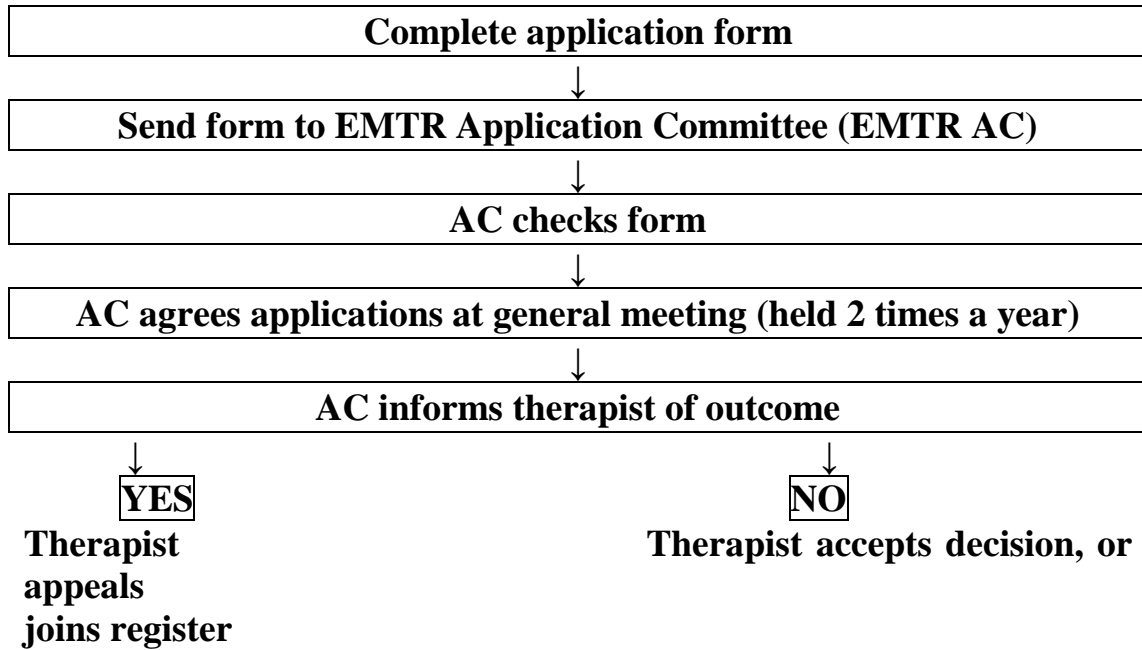
### **WORK GROUP 1: MEMBERSHIP OF NEW EMTR COMMISSION**

Membership has maximum 7 members, from the 3 regions of Europe.

Members of new EMTR Commission voted at GA, for 3-5 years.

Qualifications for membership to new commission to be discussed. Only music therapists? High quality academic qualification is important. Experience of registration important.

**WORK GROUP 2: OUTLINE STRUCTURE FOR PROCESS OF APPLYING TO BECOME REGISTERED**

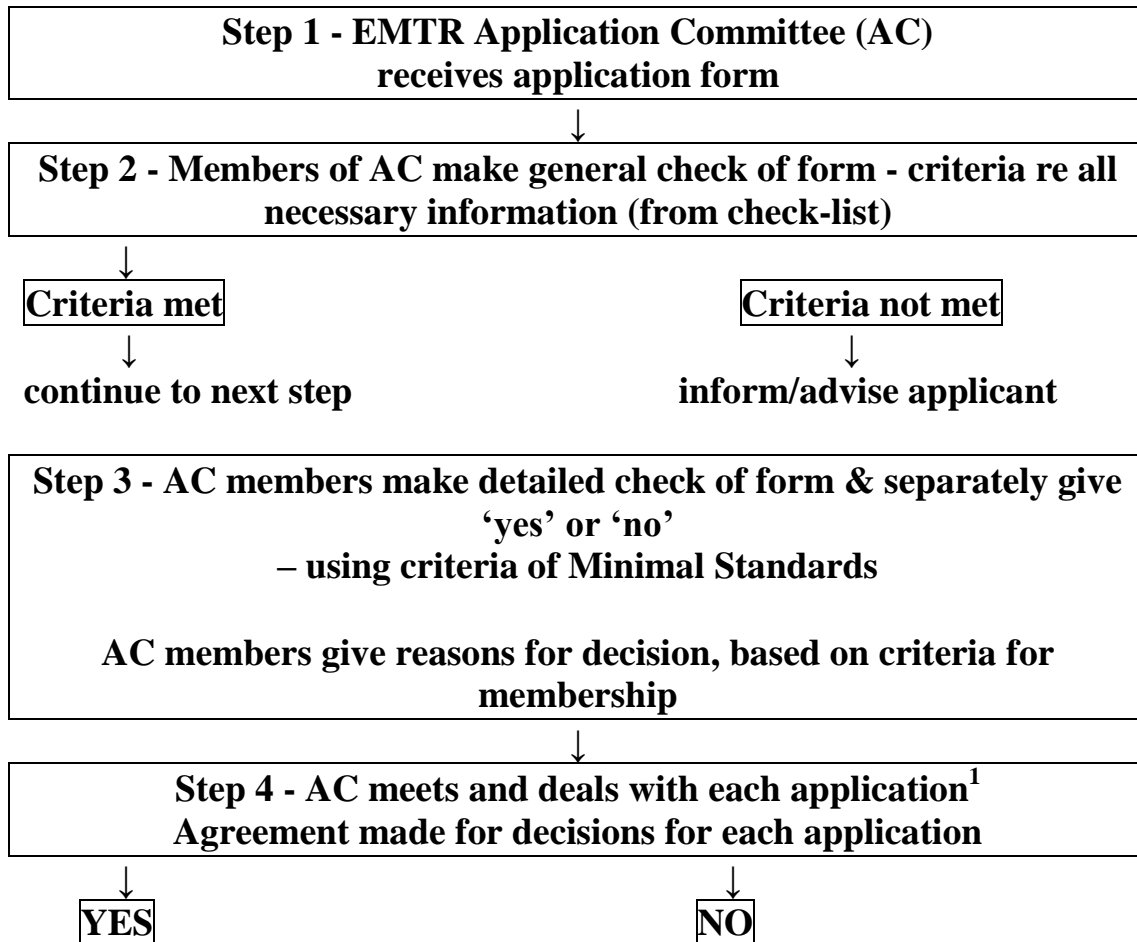


Group 3 has to develop the actual documents.

ESSENTIAL: we have a COUNCIL of the EMTR.

Then sub-groups – to work on different things (Application Committee, etc)

### **WORK GROUP 3: OUTLINE STRUCTURE FOR PROCESSING APPLICATIONS**



Documents in development: Membership of Application Committee; Membership of EMTR Council; Criteria for information needed; Criteria for Minimal Standards Appeals procedure; Timeline; Application form.

<sup>1</sup> Suggestion: EMTR AC meets twice a year – once during GA, once approx half-way point between GAs

### **WORK GROUP 4: EMTR ON THE NEW EMTC WEBSITE**

- EMTR – what it is
- Structure for process of applying to become registered
- Structure for processing applications
- Application forms as a download section
- Clear instructions on payments, country delegate election, etc
- EMTR – commission members
- Contact information for questions concerning the EMTR
- Appeals, complaints, conditions for special applications
- The register (possibility to search by country)
- Training institutions who meet the register requirements

### **WORK GROUP 5: APPEALS, COMPLAINTS, CONDITIONS FOR SPECIAL APPLICATIONS**

*Appeals:* On every form of the future procedure there is an indication: You find more information about EMTC and EMTR on our Homepage under [www.emtc-eu.org](http://www.emtc-eu.org). Appeal system is for fair practice.

*Complaints:* We use the complaints system established by EMTC 2004, but with some revisions to fit the EMTR.

*Conditions for special applications*

In discussion.

### **WORK GROUP 6: WHAT MEMBERS WILL GAIN FROM THE EMTR**

1. Safeguards quality of our profession
2. Enables mobility in Europe
3. Safeguard the quality of the patients or institution of the registered music therapist
4. Motivation for long life learning
5. Associations and training courses have a reference point for their identity.
6. Strengthens identity and self-confidence as a music therapist within the health/clinical system
7. basis/ support for developing national recognition

The existence of the EMTR is a guarantee of quality and crucial as a reference for other countries. It is also for countries that are still developing a national identity & formalizing training standards. European identity does not destroy national identity.

We should also include Julie's ideas (in Ireland) that EMTR is a process – a gold standard for the future. The EMTR is a long-term project that prepares for the future.

## **WORK GROUP 7: DEFINITIONS**

### **1) Definition of Professional Association**

*An official organisation representing music therapists in any one country or an official organisation representing the development and practice of music therapy in any one country.*

*This excludes schools, training or research institutes clinical centres and community centres offering music therapy training.*

*(EMTC - Voted at the GA in 2003, bylaws)*

### **2) Definition of Register**

*A register is a list of professionals who are registered by a commonly agreed standard. The EMTR register is established by agreement of the Registration Commission of the EMTC. It defines the qualifying standards of a trained qualified music therapist above all differences within the music therapy landscape in the European countries. A register is necessary to assure the professional qualification on a European level. A Registration gives a standard that people move towards (either through post-training experience, or further training)*

### **3) CPD / Re-registration**

*A register acknowledges the culture of Continuing Professional Development CPD as an imperative for all clinical work. The registered music therapist must reapply every five years to renew its accrediting status by the required credit points. The requirements for re-certification assure continued competence in music therapy practice. The cycle is a five year period following entrance registration as a European certified music therapist. There will be a fee for considering re-certification, which will be set by the EMTC.*

### **4) Definition of "self experience"**

*Personal psychotherapeutic experience or equivalent personal music therapeutic experience. It ensures that the professionals can identify and appropriately manage their involvement in and contributions to the processes of the therapies that they practice in accordance with their specific methods.*

***Definitions in discussion:***

**5) Definition of “ongoing Psychotherapy”**

**6) Definition of music therapist**

**7) Definitions of membership categories:**

**8) Definition of Supervision**

**9) Definition: Intersession= Group-supervision**

**10) Definition of Contact Hours**